

## DCH-5000P

### Multi-Format professional HDTV Processor

As the latest version of PBI's flagship professional IRD, the DCH-5000P's capability to decode all video formats. Coupled with a wide choice of input options for all transmission mediums, DCH-5000P provides significant benefits and maximum flexibility for professionals who wish to migrate their operations from MPEG-2 SD to MPEG-4 AVC HD. With a built-in Multiplexer/Filter, the output TS could be highly customized. LAN control and monitoring are achieved by TCP/IP, SNMP and HDMS\*. Equipped with 2 PCMCIA slots, DCH-5000P supports various CA systems such as Conax, Cryptoworks, Irdeto, NDS, Mediaguard, SECA and Viaccess etc. All of these flexibilities make the receiver the best choice for your digital Headend System.

(\*Headend Devices Management System, a PBI's proprietary software).



### Features

- \* MPEG-2/4 SD and HD 4:2:0 decoding
- \* MPEG-4 AVC SD decoding
- \* MPEG-4 AVC HD decoding
- \* HD to SD down-conversion
- \* HD-SDI video output
- \* SDI video output
- \* YPbPr video output
- \* 2 Stereo pair audio decode
- \* Built-in Multiplexer/Filter
- \* IP input or output with UDP/RTP
- \* Multicast and Unicast on IP
- \* Supports various Conditional Access systems
- \* SDI video output with digital audio embedded
- \* Compatible with Multiple De-encrypt CI modules
- \* Teletext VBI, EBU subtitle and DVB subtitle
- \* Upgradable through LAN
- \* Easy-to-use LCD menu

### Specifications

QPSK Demodulation (Fully comply with DVB-S, MPEG-2, and ETSI 300421 standards)	
Input Frequency Range	950~2150MHz
Input Level	-25dBm~65dBm
Input Impedance	75Ω F type
Symbol Rate	2~45Mb/s (SCPC or MCPC)
Rolling Off Factor	0.35
Punctured Rates	1/2, 2/3, 3/4, 5/6, 6/7,7/8

\*Specifications are subject to change without notice\*

Team-up with PBI, Brighten Your Digital View!

[WWW.PBI-CHINA.COM](http://WWW.PBI-CHINA.COM)



地址: 北京市海淀区苏州街75号鼎钧大厦401室  
邮编: 100080 E-mail: [mkt@pbicn.com](mailto:mkt@pbicn.com)  
电话: 010-82617178  
传真: 010-82610263

Room 401, Bld.Dingjun Dasha, No.75 SuZhou Street,  
Haidian District, Beijing, China, 100080  
Tel: +86-10-82617178  
Fax: +86-10-82610263

Reeds Salomon Decoding	204, 188, T = 8 & I=12
<b>DVB-C QAM Demodulation</b>	
<b>Tuner</b>	
Input Symbol Rate Range	1~7Mbps (PAL), 1~6Mbps (NTSC)
Demodulation	16/32/64/128/256QAM
Tuner Bandwidth	6 MHz or 7 MHz or 8 MHz
<b>Input</b>	
Frequency Range	50~860MHz
Digital Signal Input Level	-15~15dBmV
Input Impedance	75Ω, IEC Female (7/8MHz) or F Female (6MHz) Input
<b>DVB-T COFDM Demodulation (Fully comply with DVB-T&amp;MPEG2 standards)</b>	
<b>Tuner</b>	
Input Symbol Rate Range	4.98~31.67Mbit/s (8MHz bandwidth)
Demodulation	COFDM
Constellation	QPSK, 16QAM, 64QAM
Tuner Bandwidth	8MHz
FFT mode	2K/8K
Guard Interval	1/4, 1/8, 1/16, 1/32, off
FEC Code Rate	1/2, 2/3, 3/4, 5/6 and 7/8
<b>Input</b>	
Frequency Range	470-862MHz (8MHz)、174-230MHz (7MHz)
Digital Signal Input Level	-20~-70dBmV
Input Impedance	75Ω,IEC Female (7/8MHz) or F Female (6MHz) Input
<b>DS3 Input</b>	
Input Impedance	75Ω
Connector	BNC
Maximum Input Code Rate	44.736Mbit/s
Format	Unframed Framing according to G.804 / G.752 (DS3)
<b>DS3 Loop Through Output</b>	
Impedance	75Ω
Maximum Output Code Rate	44.736Mbit/s
Connector	BNC
Format	Unframed Framing according to G.804 / G.752 (DS3)
<b>TS over IP Output</b>	
100base-T	RJ45
Maximum Output code Rate	70Mbits/s
UDP/RTP	Multicast or Unicast
Multicast Control Protocol	IGMPV2
<b>CPU</b>	
Chipset	STi7109

\*Specifications are subject to change without notice\*

**Team-up with PBI, Brighten Your Digital View!**

[WWW.PBI-CHINA.COM](http://WWW.PBI-CHINA.COM)



地址：北京市海淀区苏州街75号鼎钧大厦401室  
 邮编：100080 E-mail: [mkt@pbicn.com](mailto:mkt@pbicn.com)  
 电话：010-82617178  
 传真：010-82610263

Room 401, Bld.Dingjun Dasha, No.75 SuZhou Street,  
 Haidian District, Beijing, China, 100080  
 Tel: +86-10-82617178  
 Fax: +86-10-82610263

Clock Frequency	266MHz
SDRAM	32Mbyte/64Mbyte
FLASH	16Mbyte
<b>Rear Panel</b>	
LNB Input and Output	1× Input, 1×loop through output
Power Supply	AC 90~240V,50~60Hz
RS-232	1×9-pin D-sub male(for software update,Max Data Rate is 115200bps)
RJ45	1×Ethernet control port
ASI input	1
ASI output	1
SDI output	1
Audio Balance output	1
YPbPr output	1
CVBS output	1×RCA, 1×BNC
AES_EBU Output	1×XRL port
<b>General</b>	
Power Supply	AC 90V~260V 50Hz/60Hz
Net Weight	5Kg
Dimensions	44mm×255mm×483mm
Operating Temperature	0~45℃
Storage Temperature	20~70℃

## DCH-5000P Multi-Format Professional HDTV Processor Option List

Function	Model No.	DCH-5000P-30xx					DCH-5000P-42xx					DCH-5000P-44xx				
		-S	-S2	-T	-C	-D	-S	-S2	-T	-C	-D	-S	-S2	-T	-C	-D
DVB-S Input/Loop through Output		●					●					●				
DVB-S2 Input/Loop through Output			●					●					●			
DVB-T Input/Loop through Output				●					●					●		
DVB-C Input/Loop through Output					●					●					●	
DS3 Input/Loop through Output						●										●
32 Channel TS/IP Output												●	●	●	●	●
6 Channel TS/IP Output							●	●	●	●	●					
PCMCIA Slot x 2				●					●						●	
TS Input & Output				●					●						●	
SDI Output(HD-SDI)				●					●						●	
HDMI Output				●					●						●	
CVBS Output				●					●						●	
YPbPr Output				●					●						●	
AES_EBU Output				●					●						●	
LAN Control(SNMP)				●					●						●	
		● Standard														

\*Specifications are subject to change without notice\*

Team-up with PBI, Brighten Your Digital View!

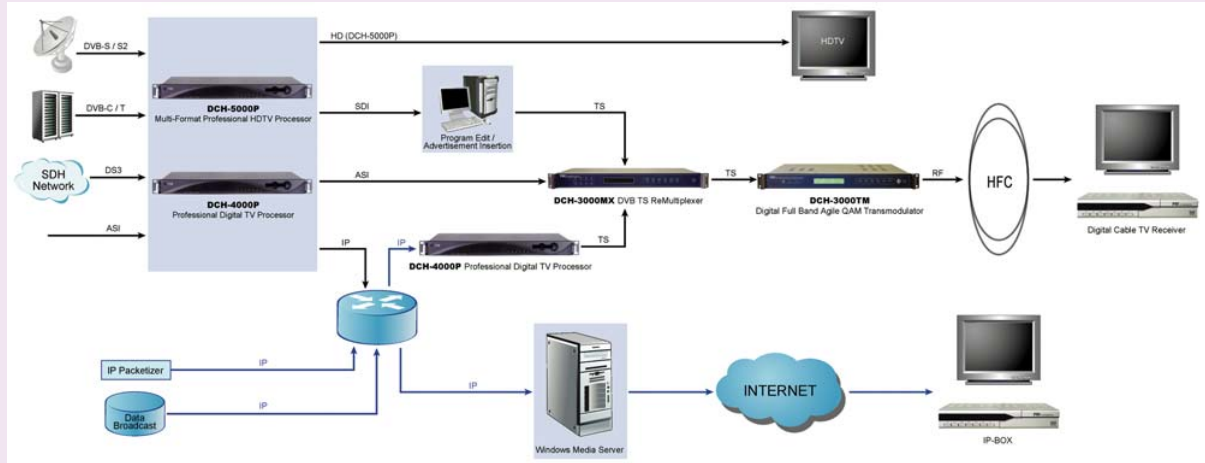
WWW.PBI-CHINA.COM



地址: 北京市海淀区苏州街75号鼎钧大厦401室  
 邮编: 100080 E-mail: [mkt@pbicn.com](mailto:mkt@pbicn.com)  
 电话: 010-82617178  
 传真: 010-82610263

Room 401, Bld.Dingjun Dasha, No.75 SuZhou Street,  
 Haidian District, Beijing, China, 100080  
 Tel: +86-10-82617178  
 Fax: +86-10-82610263

# Headend System



\*Specifications are subject to change without notice\*

**Team-up with PBI, Brighten Your Digital View!**

[WWW.PBI-CHINA.COM](http://WWW.PBI-CHINA.COM)



地址：北京市海淀区苏州街75号鼎钧大厦401室  
邮编：100080 E-mail: [mkt@pbicn.com](mailto:mkt@pbicn.com)  
电话：010-82617178  
传真：010-82610263

Room 401, Bld.Dingjun Dasha, No.75 SuZhou Street,  
Haidian District, Beijing, China, 100080  
Tel: +86-10-82617178  
Fax: +86-10-82610263